

Lead Sheet

Reformation Hymn

Based on the recording from the Church Works Media album "Shout Out for Joy"

Words by CHRIS ANDERSON
Music by BOB KAUFLIN
Arranged by JON HORTON & BOB KAUFLIN

KEY: D

INTRO

♩ = 83

Musical notation for the first line of the Intro, measures 1-3. Chords: D, Em, A/C#, D, G, D. Labels: *Piano & bass only* and *Rhythm in*.

Musical notation for the second line of the Intro, measures 4-6. Chords: D, Em, A/C#, D, G, D. Label: *Band in*.

VERSE 1

Musical notation for the first line of Verse 1, measures 8-11. Chords: D, G/D, D. Labels: *opt. male lead* and *Piano-led, light rhythm*. Lyrics: 1. We will trust God's Word a-lone, where His

Musical notation for the second line of Verse 1, measures 12-15. Chords: D/F#, G2, Asus, A, Em, D/F#, G. Lyrics: per-fect will is known; Our tra-di-tions shift like sand while His

Musical notation for the third line of Verse 1, measures 16-19. Chords: Bm, A, D, G/D. Labels: *opt. female lead*. Lyrics: Truth for-ev-er stands. We will live by faith a-

Musical notation for the fourth line of Verse 1, measures 20-23. Chords: D, D/F#, G2, Asus, A, Em, D/F#. Lyrics: lone, clothed in mer-it not our own; All we claim is Je-sus

Musical notation for the fifth line of Verse 1, measures 24-27. Chords: G, Bm, A, D. Labels: *opt. choir/congr joins*. Lyrics: Christ and His fin-ished sac-ri-fice. Glo-ry

Reformation Hymn (Lead Sheet) – page 2 of 4

CHORUS 1

28 *A/C#* *opt. female harm.* *G/B* *D* *G/A* *D*

be, glo - ry be to God a - lone through the

Piano only *Full band*

32 *A/C#* *G/B* *D* *Asus* *A* *Gmaj7* *F#m7*

church He re - deemed and made His own; He has

36 *Em7* *Asus* *A* *D/F#* *G*

freed us, He will keep us till we're safe - ly home; Glo - ry

INTERLUDE 1

40 *Em* *Asus* *A* *D* *Em* *A/C#* *D*

be, glo - ry be to God a - lone!

44 *G* *D* *D* *Em* *A/C#* *D* *G* *D*

VERSE 2

49 *D* *G/D* *D* *D/F#* *G*

2. We are saved by grace a - lone, un - de - served, yet free - ly

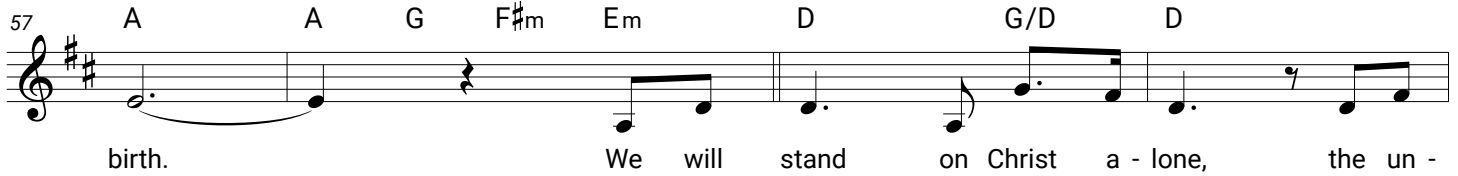
Full band

53 *Asus* *A* *Em* *D/F#* *G* *Bm*

shown; No ac - com - plish - ment on earth can a - chieve the sec - ond

Reformation Hymn (Lead Sheet) – page 3 of 4

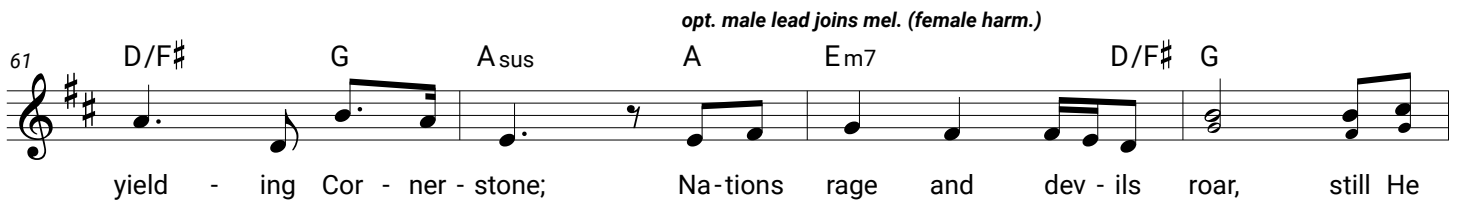
57 A A G F#m Em D G/D D



birth. We will stand on Christ a-lone, the un-

61 D/F# G Asus A Em7 D/F# G

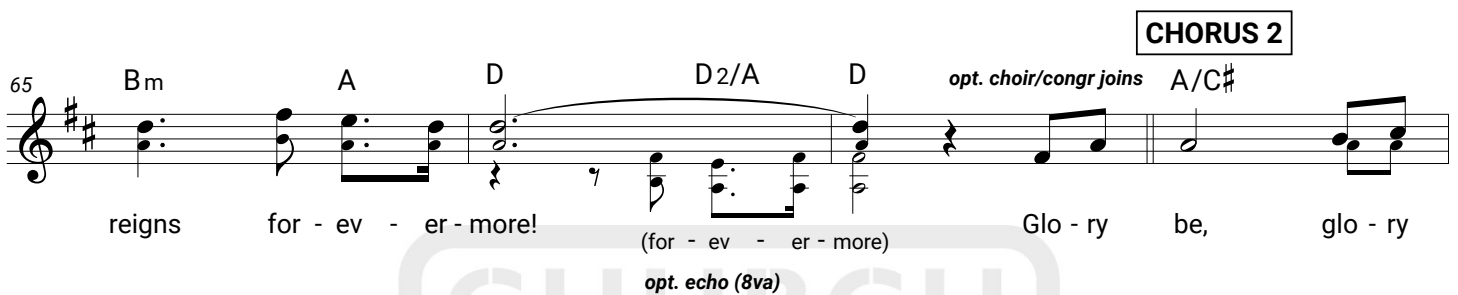
opt. male lead joins mel. (female harm.)



yield - ing Cor - ner - stone; Na - tions rage and dev - ils roar, still He

65 Bm A D D2/A D *opt. choir/congr joins* A/C#

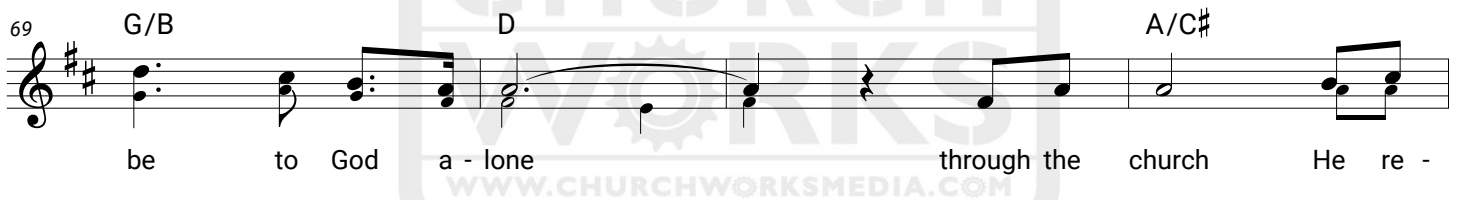
CHORUS 2



reigns for - ev - er - more! (for - ev - er - more) Glo - ry be, glo - ry

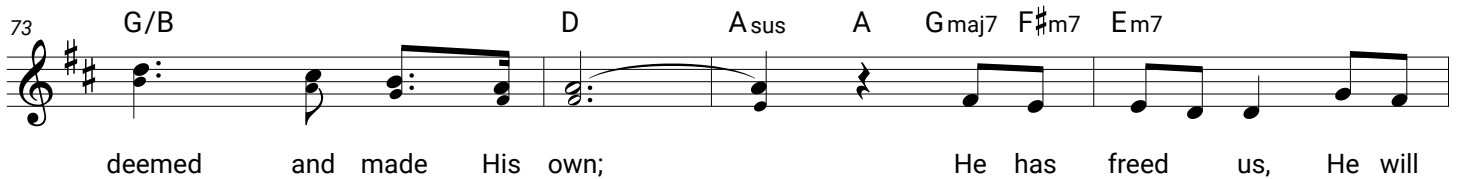
opt. echo (8va)

69 G/B D A/C#



be to God a - lone through the church He re -

73 G/B D Asus A Gmaj7 F#m7 Em7



deemed and made His own; He has freed us, He will

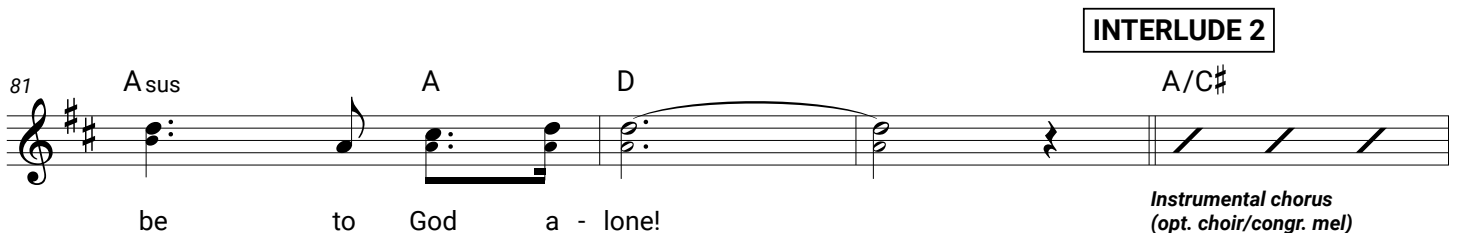
77 Asus A D/F# G Em7



keep us till we're safe - ly home; Glo - ry be, glo - ry

81 Asus A D A/C#

INTERLUDE 2



be to God a - lone!

Instrumental chorus (opt. choir/congr. mel)

Reformation Hymn (Lead Sheet) – page 4 of 4

85 G/B D G/A D A/C#

TAG

89 G/B D Asus A Gmaj7 F#m7 Em7

He has freed us, He will

93 A/C# D/F# G Em11

keep us till we're safe - ly home; Glo - ry be, glo - ry

97 Asus A/C# Bm A G D/F# Em7

be to God a - lone! Glo - ry be, glo - ry

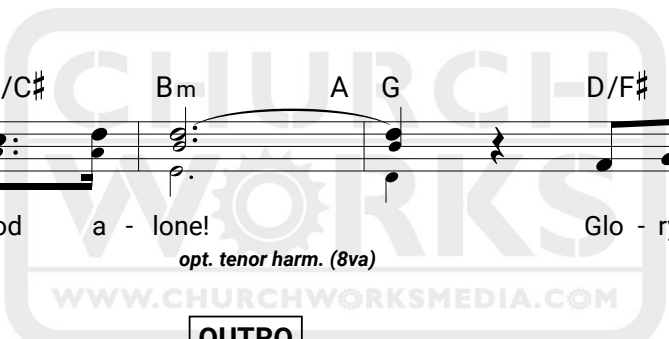
opt. tenor harm. (8va)

OUTRO

101 Asus A D Em A/C# D G D

be to God a - lone!

105 D Em A/C# D G D



PREVIEW COPY ONLY