

Reformation Hymn

Based on the recording from the Church Works Media album *Shout Out for Joy*

LEAD, CHOIR* & PIANO

Words by CHRIS ANDERSON

Music by BOB KAUFLIN

Arranged by JON HORTON and BOB KAUFLIN

Orchestrated by RAYMOND SCHNURR

With Joyful Conviction (♩ = 83)

Musical notation for the first system of the piano accompaniment, measures 1-2. The score is in D major and 3/4 time. The right hand features a rhythmic pattern of eighth notes, while the left hand plays a simple bass line. Dynamics include *mf* and *dolce*.

Musical notation for the second system of the piano accompaniment, measures 3-4. The right hand continues the eighth-note pattern with some melodic variation. Dynamics include *f*.

Musical notation for the third system of the piano accompaniment, measures 5-6. The right hand continues the eighth-note pattern. Dynamics include *mf*.

Verse 1

Musical notation for the vocal line and piano accompaniment for Verse 1, measures 9-12. The vocal line is labeled "Male Lead" and *mf*. The lyrics are: "We will trust God's Word a-lone, where His". The piano accompaniment continues with the eighth-note pattern.

*In this score, the choir plays a supporting role to the Lead Vocals. There is a separate Choir Octavo that can be used as a stand-alone choir arrangement or for choir acting as lead.

12

per - fect will is known; Our tra - di - tions shift like

12 D/F# Gsus2 Asus4 A Em D/F#

15

sand while His Truth for - ev - er stands.

15 G Bm A

18 Female Lead *mf*

We will live by faith a - lone, clothed in

18 D G/D D

mf

21

mer - it not our own; All we claim is Je - sus

21 D/F# Gsus2 Asus4 A Em D/F#

24

Christ and His fin - ished sac - ri - fice.

24 G Bm A D

27

Male Lead (mel) Female Lead (harm) **mf** **Chorus 1**

Glo - ry be, glo - ry be to God a -

SA **mf** TB **mf**

27 A/C# G/B **mf**

30

lone through the church He re -

lone through the church He re -

Detailed description: This block contains the first system of music, measures 30-32. It features a vocal line and a piano accompaniment. The vocal line has a long note for 'lone' followed by 'through the church He re -'. The piano accompaniment mirrors the vocal line. The key signature has two sharps (F# and C#).

30

D G/A D A/C#

Detailed description: This block shows the piano accompaniment for measures 30-32. It includes a treble and bass clef. Chord symbols D, G/A, D, and A/C# are placed above the treble staff. The piano part features a steady accompaniment with chords and moving lines in both hands.

33

deemed and made His own. He has

deemed and made His own. He has

Detailed description: This block contains the second system of music, measures 33-35. The vocal line has a long note for 'deemed' followed by 'and made His own. He has'. The piano accompaniment mirrors the vocal line. A large watermark 'CHURCH WORKS' and 'WWW.CHURCHWORKSMEDIA.COM' is overlaid on the page.

33

G/B D Asus4 A Gmaj7 F#m7

Detailed description: This block shows the piano accompaniment for measures 33-35. It includes a treble and bass clef. Chord symbols G/B, D, Asus4, A, Gmaj7, and F#m7 are placed above the treble staff. The piano part continues with a steady accompaniment.

36

freed us, He will keep us till we're safe - ly

36

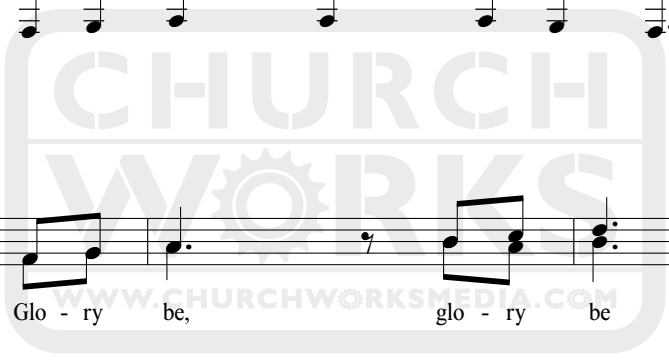
Em7 Asus4 A D/F#

39

home. Glo - ry be, glo - ry be to God a -

39

G Em Asus4 A



PREVIEW COPY ONLY

Interlude 1

42

lone! _____

lone! _____

42 D Em A/C# D G D

f

45

45 D Em A/C# D

48

Male Lead *mf* **Verse 2**

We are saved by grace a -

48 G D D G/D

mf

51

lone— un - de - served, yet free - ly shown; No ac -

51 D D/F# G Asus4 A

54

com - plish - ment on earth can a - chieve the sec - ond

54 Em D/F# G Bm

57 Female Lead *mf*

birth. We will stand on Christ a -

57 A A G F#m Em D G/D

60 Add Male Lead (mel)

lone, the un - yield - ing Cor - ner - stone; Na - tions

60 D D/F# G Asus4 A

63 Female Lead (harm)

rage and dev - ils roar, still He reigns for - ev - er -

63 Em7 D/F# G Bm A

66 Chorus 2

more! *f* Glo - ry be, glo - ry

For - ev - er - more! *f* Glo - ry be, glo - ry

66 D Dsus2/A D A/C#

69

be to God a - lone through the

69

G/B D G/A D

72

church He re - deemed and made His own.

72

A/C# G/B D

75

He has freed us, He will keep us till we're

75

Asus4 A Gmaj7 F#m7 Em7 Asus4 A

78

safe - ly home. Glo - ry be, glo - ry

78

D/F# G Em7



PREVIEW COPY ONLY

Opt. choir/congr. mel.

81

be to God a - lone! Glo - ry

mp

81

A sus4 A D

Interlude 2

84

be, glo - ry be to God a - lone

84

A/C# G/B D G/A

f

87

— through the church He re - deemed and made His

87

D A/C# G/B

PREVIEW COPY ONLY

Tag

90 *f* own. He has freed us, He will

90 D Asus4 A G maj7 F#m7 Em7 *f*

93 keep us till we're safe - ly home. Glo - ry

93 A/C# D/F# G



PREVIEW COPY ONLY

96

be, glo - ry be to God a - lone!

be, glo - ry be to God a - lone! (God a -

96

Em11 Asus4 A/C# Bm A

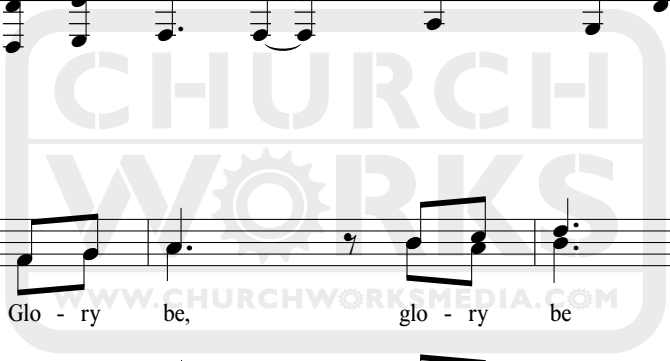
99

Glo - ry be, glo - ry be to God a -

lone!) Glo - ry be, glo - ry be to God a -

99

G D/F# Em7 Asus4 A



PREVIEW COPY ONLY

Outro

102

lone!

lone!

102

D Em A/C# D G D

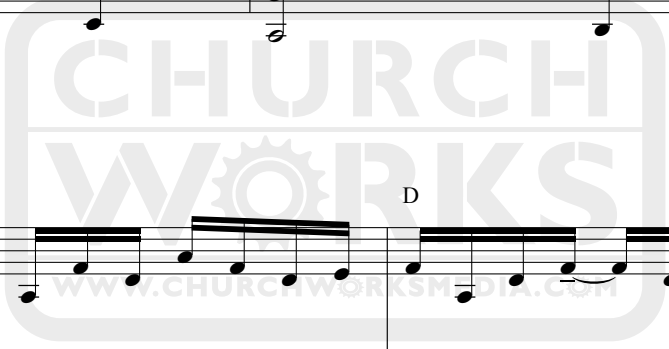
f

105

D Em

107

A/C# D G D



PREVIEW COPY ONLY

Choir Octavo

Reformation Hymn

Based on the recording from the Church Works Media album *Shout Out for Joy*

CHOIR LEAD*

Words by CHRIS ANDERSON

Music by BOB KAUFLIN

Arranged by JON HORTON and BOB KAUFLIN

Orchestrated by RAYMOND SCHNURR

With Joyful Conviction (♩ = 83)

The piano accompaniment consists of two systems of music. The first system (measures 1-2) features a treble clef with a key signature of two sharps (D major) and a 3/4 time signature. The bass clef part starts with a whole rest. Dynamics include *mf* and *dolce*. Chords are indicated as D, Em, A/C#, and D. The second system (measures 3-4) continues the accompaniment with dynamics *f* and chords G, D, D, and Em. The third system (measures 5-6) features chords A/C#, D, G, and D.

Verse 1 begins at measure 9. The male solo part (or section) is written in the bass clef with a key signature of two sharps and a 3/4 time signature. The lyrics are: "We will trust God's Word a-lone, where His". The piano accompaniment for this section is in the treble and bass clefs, with a key signature of two sharps and a 3/4 time signature. Dynamics include *mf*. Chords are indicated as D, G/D, and D.

*This octavo can be used in place of Lead Vocals.

Reformation Hymn (Choir Lead) – page 2 of 12

12

per - fect will is known; Our tra - di - tions shift like

12 D/F# Gsus2 Asus4 A Em D/F#

Detailed description: This system contains measures 12, 13, and 14. The vocal line (bass clef) has lyrics: "per - fect will is known; Our tra - di - tions shift like". The piano accompaniment (treble and bass clefs) features chords and moving lines. Chords are indicated above the staff: D/F#, Gsus2, Asus4, A, Em, and D/F#.

15

sand while His Truth for - ev - er stands.

15 G Bm A

Detailed description: This system contains measures 15, 16, and 17. The vocal line (bass clef) has lyrics: "sand while His Truth for - ev - er stands.". The piano accompaniment (treble and bass clefs) continues with chords and moving lines. Chords are indicated above the staff: G, Bm, and A.

18 Female Solo (or section) *mf*

We will live by faith a - lone, clothed in

18 D G/D D

mf

Detailed description: This system contains measures 18, 19, and 20. Measure 18 is a female solo (or section) marked *mf*. The lyrics are: "We will live by faith a - lone, clothed in". The piano accompaniment (treble and bass clefs) features chords and moving lines. Chords are indicated above the staff: D, G/D, and D. A *mf* dynamic marking is present in the piano part at the start of measure 19.

Reformation Hymn (Choir Lead) – page 3 of 12

21

mer - it not our own; All we claim is Je - sus

21 D/F# Gsus2 Asus4 A Em D/F#

24

Christ and His fin - ished sac - ri - fice.

24 G Bm A D

WWW.CHURCHWORKSMEDIA.COM

27

Chorus 1

SA *mf* Glo - ry be, glo - ry be to God a -

TB *mf*

27 A/C# G/B *mf*

Reformation Hymn (Choir Lead) – page 4 of 12

30

lone through the church He re -

30

D G/A D A/C#

33

deemed and made His own. He has

33

G/B D Asus4 A Gmaj7 F#m7

36

freed us, He will keep us till we're safe - ly

36

Em7 Asus4 A D/F#

39

home. Glo - ry be, glo - ry be to God a -

39

G Em Asus4 A

Interlude 1

42

lone!

42

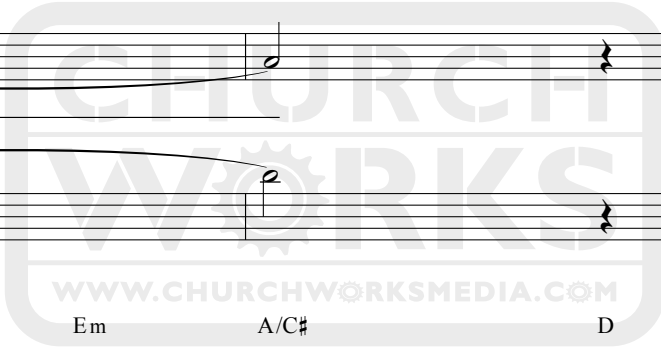
D Em A/C# D G D

f

45

D Em A/C# D

PREVIEW COPY ONLY



Reformation Hymn (Choir Lead) – page 6 of 12

Verse 2

48

mf We are saved by grace a -

48

G D D G/D

mf

51

p

Oo— lone— un - de - served, yet free - ly shown; No ac -

51

D D/F# G Asus4 A

54

p

Oo— com - plish - ment on earth can a - chieve the sec - ond

54

Em D/F# G Bm

Reformation Hymn (Choir Lead) – page 7 of 12

57 *mf*

(oo) _____ We will stand on Christ a -
 birth. _____

57 A A G F#m Em D G/D

mf

60 lone, the un - yield - ing Cor - ner - stone; Na - tions

p Oo _____

60 D D/F# G Asus4 A

www.churchworksheets.com

63 rage and dev - ils roar, still He reigns for - ev - er -

63 Em7 D/F# G Bm A

Chorus 2

66 *f*
 more! (For - ev - er - more!) Glo - ry be, glo - ry

66 D Dsus2/A D A/C# *f*

69 be to God a - lone through the

69 G/B D G/A D

72 church He re - deemed and made His own.

72 A/C# G/B D

Reformation Hymn (Choir Lead) – page 9 of 12

75

He has freed — us, He will keep — us till we're

75

Asus4 A Gmaj7 F#m7 Em7 Asus4 A

78

safe - ly home. Glo - ry be, glo - ry

78

D/F# G Em7

81

Opt. choir/congr. mel.
mp

be to God a - lone! Glo - ry

mp

81

Asus4 A D

Interlude 2

84

be, glo - ry be to God a - lone

84 A/C# G/B D G/A

f

87

— through the church He re - deemed and made His

87 D A/C# G/B

90

own. He has freed us, He will

Tag

f

90 D Asus4 A G maj7 F#m7 Em7

f

Reformation Hymn (Choir Lead) – page 11 of 12

93

keep — us till we're safe - ly home. Glo - ry

93

A/C# D/F# G

96

be, glo - ry be to God a - lone! (God a -

96

Em11 Asus4 A/C# Bm A

99

lone!) Glo - ry be, glo - ry be to God a -

99

G D/F# Em7 Asus4 A

Outro

102

lone!

Detailed description: This system contains measures 102 and 103. The vocal line (treble clef) has a long note on the word 'lone!' that spans across both measures. The piano accompaniment (bass clef) consists of a sustained chord in measure 102 and a whole note chord in measure 103.

102

f

D Em A/C# D G D

Detailed description: This system contains measures 102, 103, and 104. The piano accompaniment (bass clef) has a melody in the right hand and chords in the left hand. Chords are labeled above the staff: D, Em, A/C#, D, G, D. The dynamic marking *f* is present in measure 102.

105

D Em

Detailed description: This system contains measures 105 and 106. The piano accompaniment (bass clef) has a melody in the right hand and chords in the left hand. Chords are labeled above the staff: D, Em.

107

A/C# D G D

Detailed description: This system contains measures 107, 108, 109, and 110. The piano accompaniment (bass clef) has a melody in the right hand and chords in the left hand. Chords are labeled above the staff: A/C#, D, G, D. The system ends with a double bar line.