

The Father Looks on Me

Based on the recording from the
Church Works Media album **Shout Out for Joy**

Words by CHRIS ANDERSON
Music by REBEKAH HOLDEN
Arranged by JON HORTON

Original recorded key

KEY: E

INTRO

♩ = 72

E Esus E B7/D# C#m B A E Esus E B7/D#

Vocals

*Violin, Cello, AcGtr only
(strum on chord change)

Piano
Transcr.

Piano
Reduc.

Bells/
Glock.

Violin

Cello



FOR¹ PREVIEW ONLY⁶

*Optional directions following recording arrangement

VERSE 1

C#m B A Lead vocal or congr E E sus E Amaj7

mf The Fa-ther looks on me and sees not what I was or

AcGtr only (strum on chord change)

Pno. Trs.

Pno. Rd.

mp

Glk.

Vln.

Vc.

sim.

CHURCH WORKS

WWW.CHURCHWORKSMEDIA.COM

7 8 9 10 11

FOR PREVIEW ONLY

am; He views the right - eous-ness of Christ, and not my curs - ed sin.

Pno. Trs.

Pno. Rd.

Glk.

Vln.

Vc.

**CHURCH
WORKS**
WWW.CHURCHWORKSMEDIA.COM

12 13 14 15 16

FOR PREVIEW ONLY

CHORUS 1

A maj7 B E E/G# A maj7 F#m9 B

The Fa-ther looks and pit - ies me; He knows that I am dust. He treats me

AcGtr, sus cymbal build Bass gtr in E.Gtr in (arpeggiated)

Pno. Trs.

Pno. Rd.

Glk.

Vln.

Vc.

**CHURCH
WORKS**

WWW.CHURCHWORKSMEDIA.COM

17 18 19 20 21

FOR PREVIEW ONLY

INTERLUDE 1

Amaj7 B C#m Amaj7 B sus E E sus E B7/D#

not as I de - serve, but as though I were just.

Snare build in Violin, Cello, Piano in
Brush kit (light, syncopated)

Pno. Trs.

Pno. Rd.

Glk.

Vln.

Vc.

**CHURCH
WORKS**
WWW.CHURCHWORKSMEDIA.COM

22 23 24 25 26

FOR PREVIEW ONLY

VERSE 2

C#m B A E Esus E Amaj7

The Fa-ther looks on me and gives a loaf and not a

Strings, Piano, E.Gtr out

Pno.
Trs.

Pno.
Rd.

Glk.

Vln.

Vc.



27

28

29

30

31

FOR PREVIEW ONLY

Lead & Piano
(Recording transcription)

The Father Looks on Me

Based on the recording from the
Church Works Media album **Shout Out for Joy**

Words by CHRIS ANDERSON
Music by REBEKAH HOLDEN
Arranged by JON HORTON

Original recorded key

KEY: E

INTRO

♩ = 72

E E^{sus} E B7/D# C#m B A E E^{sus} E B7/D#

mf
*Violin, Cello, AcGtr only
(strum on chord change)

*Optional directions following recording arrangement

VERSE 1

7 C#m B A E E^{sus} E

mf The Fa - ther looks on me and sees not what I

AcGtr only (strum on chord change)



FOR PREVIEW ONLY

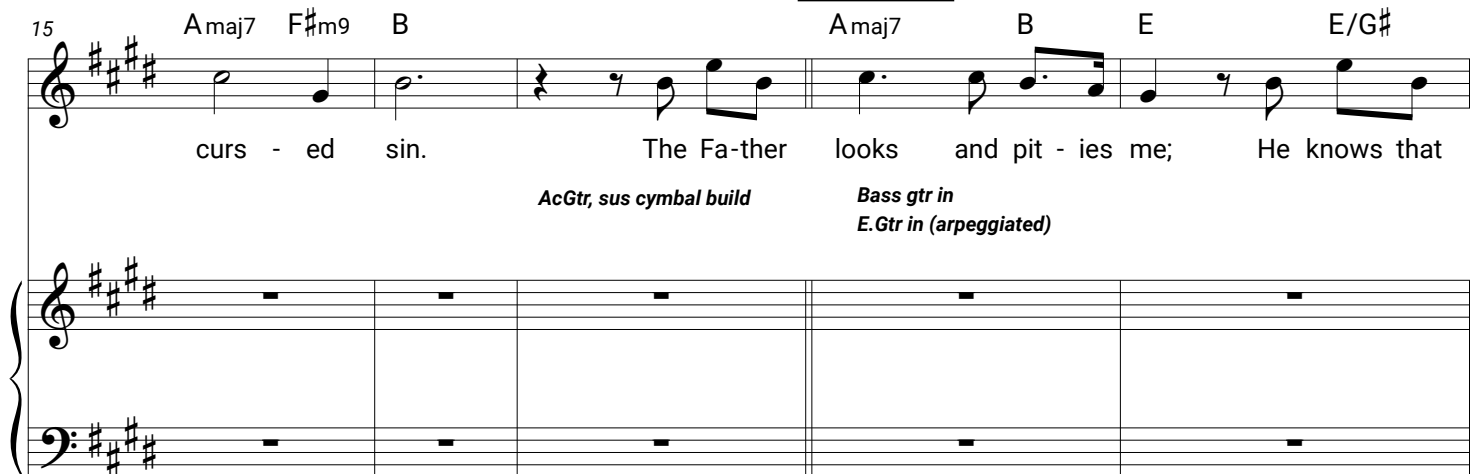
[This piano transcription from the recording is ideally supported by a full band and strings.
The "band reduction" piano part is recommended for situations with no band or a smaller instrument combo.]

CHORUS 1

15 Amaj7 F#m9 B Amaj7 B E E/G#

curs - ed sin. The Fa-ther looks and pit - ies me; He knows that

AcGtr, sus cymbal build *Bass gtr in*
E.Gtr in (arpeggiated)



20 Amaj7 F#m9 B Amaj7 B C#m

I am dust. He treats me not as I de - serve, but as though



24 Amaj7 C#m B

I

Snare build in *Violin, Cello, Piano in*
Brush kit (light, synchopated)

FOR PREVIEW ONLY



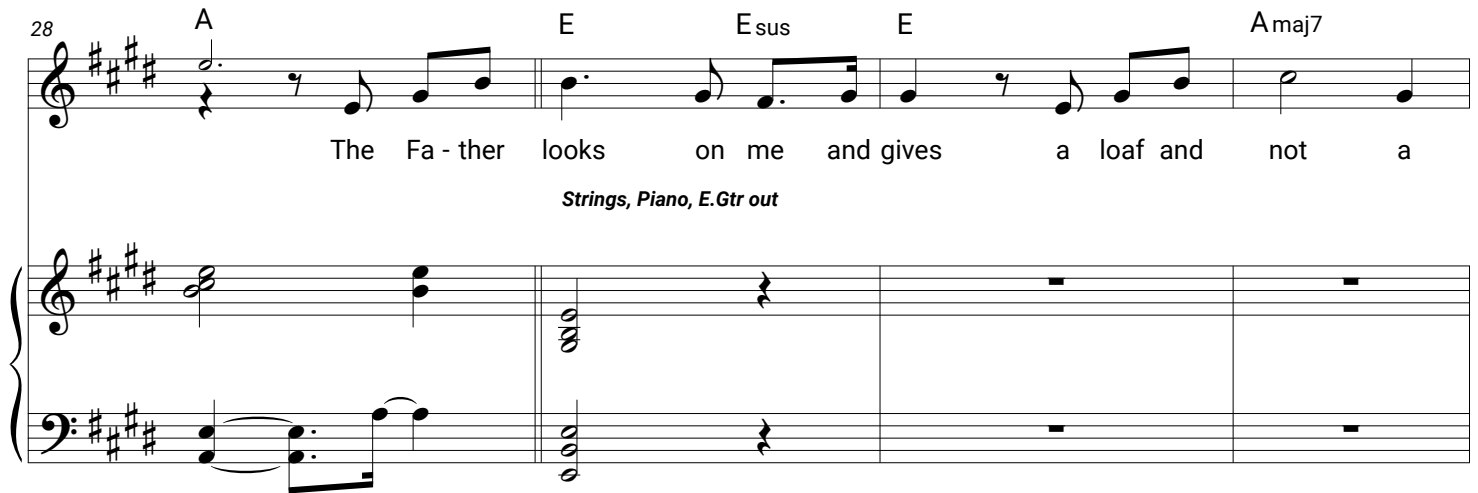
VERSE 2

28

A E E sus E A maj7

The Fa - ther looks on me and gives a loaf and not a

Strings, Piano, E.Gtr out



32

B A maj7 B C#m A maj7 F#m9 B B sus

stone. He show - ers me with per - fect gifts, for all my needs are known.



37

B A maj7 F#m9

T s wel - comed

Piano in, sus cymbal



FOR PREVIEW ONLY

41

B A^{maj7} B C^{#m} A^{maj7} B^{sus} *cres.*

home. He found an or - phan, poor and soiled, yet claimed me as His

sus cymbal build

INTERLUDE 2

45

A/C[#] B/D[#] E E/G[#] A^{maj7}

f own.

Violin, Cello in opt. glockenspiel doub. violin

Band/chords stay in 3



48

B E/G[#]

FOR PREVIEW ONLY

Lead & Piano
(Band reduction)

The Father Looks on Me

Based on the recording from the
Church Works Media album **Shout Out for Joy**

Words by CHRIS ANDERSON
Music by REBEKAH HOLDEN
Arranged by JON HORTON

Original recorded key

KEY: E

INTRO

♩ = 72

E Esus E B7/D# C#m B A E Esus E B7/D#

mf

**Violin, Cello, AcGtr only
(strum on chord change)*

mf

**Optional directions following recording arrangement*

VERSE 1

7 C#m B A *Lead vocal or congr* E Esus E

mf The Fa - ther looks on me and sees not what I

AcGtr only (strum on chord change)

11 Amaj7 C#m

was or christ, and not my



FOR PREVIEW ONLY

*[This piano reduction incorporates elements from the arrangement as a whole.
It can be used with or without other instruments.]*

CHORUS 1

15 A^{maj}7 F^{#m}9 B A^{maj}7 B E E/G[#]

curs - ed sin. The Fa-ther looks and pit - ies me; He knows that

AcGtr, sus cymbal build Bass gtr in E.Gtr in (arpeggiated)

mf

20 A^{maj}7 F^{#m}9 B A^{maj}7 B C^{#m}

I am dust. He treats me not as I de - serve, but as though



24 A^{maj}7 C^{#m} B

I

Snare build in Violin, Cello, Piano in Brush kit (light, syncopated)

FOR PREVIEW ONLY

VERSE 2

28

A E Esus E Amaj7

The Fa-ther looks on me and gives a loaf and not a

Strings, Piano, E.Gtr out

32

B Amaj7 B C#m Amaj7 F#m9 B Bsus

stone. He show-ers me with per-fect gifts, for all my needs are known.

37

B Amaj7 F#m9

The s wel - comed

Piano in, sus cymbal

FOR PREVIEW ONLY

41

B A maj7 B C#m A maj7 B sus

home. He found an or - phan, poor and soiled, yet claimed me as His

cres.

sus cymbal build

INTERLUDE 2

45

A/C# B/D# E E/G# A maj7 B A/C# B/D#

f own.

Band/chords stay in 3

Violin, Cello in
opt. glockenspiel doub. violin

**CHURCH
WORKS**

WWW.CHURCHWORKSMEDIA.COM

Band cool down

Band out (ring)

AcGtr only (strum on chord change)

50

E E/G# B7/D# C#m B

dec.

FOR PREVIEW ONLY

Bells/
Glockenspiel

The Father Looks on Me

Based on the recording from the
Church Works Media album *Shout Out for Joy*

Words by CHRIS ANDERSON
Music by REBEKAH HOLDEN
Arranged by JON HORTON

Original recorded key

KEY: E

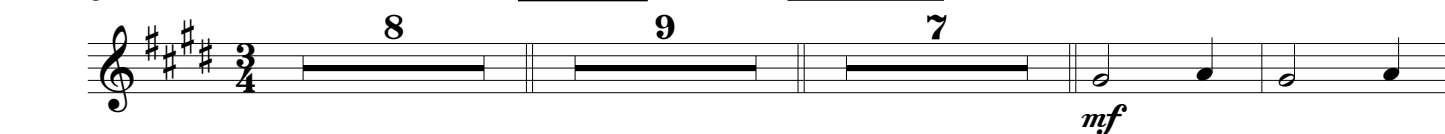
♩ = 72

INTRO

VERSE 1

CHORUS 1

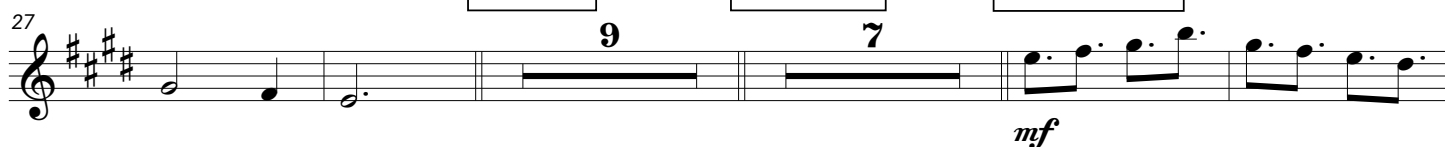
INTERLUDE 1



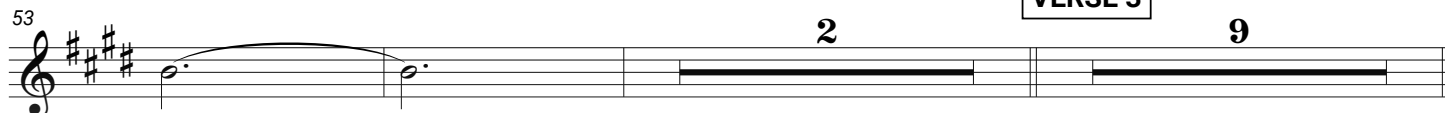
VERSE 2

CHORUS 2

INTERLUDE 2



VERSE 3



CHORUS 3



TAG



OUTRO



FOR PREVIEW ONLY

Strings Score

The Father Looks on Me

Based on the recording from the
Church Works Media album *Shout Out for Joy*

Original recorded key

KEY: E

Words by CHRIS ANDERSON
Music by REBEKAH HOLDEN
Arranged by JON HORTON

INTRO

♩ = 72

Violin

Cello

mf shape and separate

sim.

mf shape and separate

VERSE 1 **CHORUS 1** **INTERLUDE 1**

Vln.

Vc.

mf style like Intro

sim.

VERSE 2 **CHORUS 2** **INTERLUDE 2**

Vln.

Vc.

CHURCH WORKS

WWW.CHURCHWORKSMEDIA.COM

FOR PREVIEW ONLY

Violin

The Father Looks on Me

Original recorded key

Based on the recording from the
Church Works Media album *Shout Out for Joy*Words by CHRIS ANDERSON
Music by REBEKAH HOLDEN
Arranged by JON HORTON

KEY: E

♩ = 72

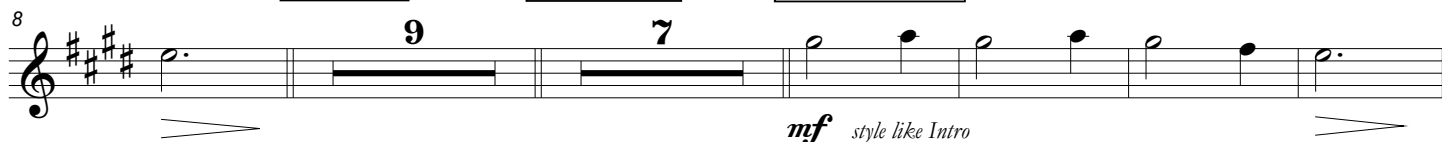
INTRO



VERSE 1

CHORUS 1

INTERLUDE 1



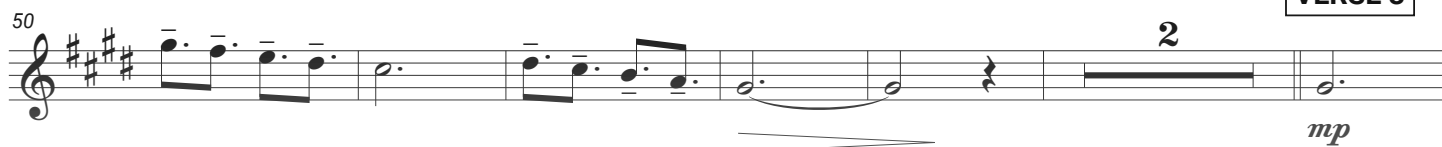
VERSE 2

CHORUS 2

INTERLUDE 2



VERSE 3



CHORUS 3



TAG



OUTRO



FOR PREVIEW ONLY

Cello

The Father Looks on Me

Based on the recording from the
Church Works Media album **Shout Out for Joy**

Words by CHRIS ANDERSON
Music by REBEKAH HOLDEN
Arranged by JON HORTON

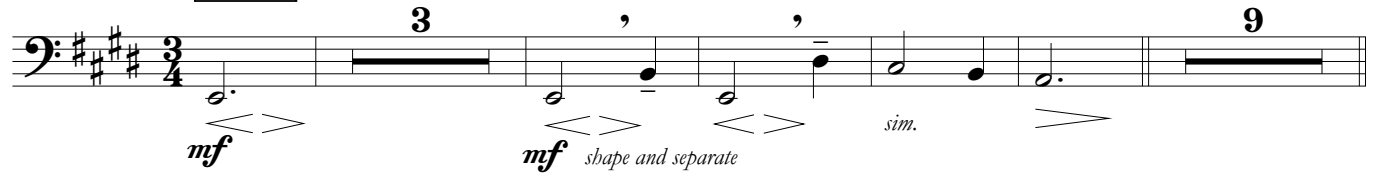
Original recorded key

KEY: E

♩ = 72

INTRO

VERSE 1



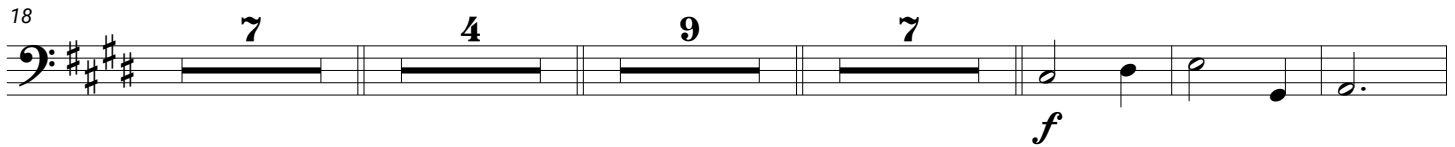
CHORUS 1

INTERLUDE 1

VERSE 2

CHORUS 2

INTERLUDE 2



CHORUS 3



Lead Sheet

The Father Looks on Me

Original recorded key

KEY: E

Based on the recording from the
Church Works Media album *Shout Out for Joy*

Words by CHRIS ANDERSON
Music by REBEKAH HOLDEN
Arranged by JON HORTON

INTRO

♩ = 72

E E^{sus} E B7/D# C#m B A E E^{sus} E B7/D#

mf *Violin, Cello, AcGtr only
(strum on chord change)

VERSE 1

7 C#m B A *Lead vocal or congr* E E^{sus} E

mf The Fa - ther looks on me and sees not what I

AcGtr only (strum on chord change)

11 A^{maj}7 B A^{maj}7 B C#m

was or am; He views the right - eous - ness of Christ, and not my

CHORUS 1

15 A^{maj}7 F#m9 B A^{maj}7 B

curs - ed sin. The Fa - ther looks and pit - ies

AcGtr, sus cymbal build *Bass gtr in*
E.Gtr in (arpeggiated)

19 E E/C# A^{maj}7 F#m9 B A^{maj}7 B

me; H not as I de-

23 C#m E B7/D#

serve,

CHURCH WORKS
WWW.CHURCHWORKSMEDIA.COM

Snare build in *Violin, Cello, Piano in*
Brush kit (light, syncopated)

VERSE 2

27 C#m B A E

The Fa - ther looks on me and gives a loaf and

Strings, Piano, E.Gtr out

*Optional directions following recording arrangement

© 2015, this arrangement © 2023 Church Works Worship (ASCAP) (adm at IntegratedRights.com).

All rights reserved. Church Works Media (churchworksmedia.com). CCLI #7191727

Unauthorized or unpurchased physical or digital copies are prohibited.

31 A⁺ B A⁺ B C⁺_m

not a stone. He show - ers me with per - fect gifts, for all my

35 A⁺ F⁺_{m9} B B^{sus} B A⁺ B

needs are known. The Fa - ther looks on me with

Piano in, sus cymbal build *E.Gtr in (arpeggiated)*

39 E E/G⁺ A⁺ F⁺_{m9} B A⁺ B

love— a child He's wel - comed home. He found an or - phan, poor and

43 C⁺_m A⁺ B^{sus} A/C⁺ B/D⁺ E E/G⁺

soiled, yet claimed me as His own.

cres. *f* *Band/chords stay in 3* *Violin, Cello in sus cymbal build* *drum, violin*

47 A⁺ B

Band cool down

53 E E^{sus} E E^{sus}

decres. *mp* The Fa - ther looks for me with

58 E A⁺ B A⁺ B

hope, for me, His way - ward son. I stand a - far, de - tained by



FOR PREVIEW ONLY

The Father Looks on Me

KEY: E

3/4, 72 bpm

Based on the recording from the
Church Works Media album **Shout Out for Joy****INTRO** *[Strings/AcGtr only (strum on chord change)]

E - Esus | E - B7/D# | C#m - B | A | (2x)

VERSE 1 [AcGtr only (strum on chord change)]

E Esus E

The Father looks on me and sees

Amaj7 B

Not what I was or am;

Amaj7 B C#m

He views the righteousness of Christ,

Amaj7 F#m9 B | B -

And not my curs - - ed sin. [AcGtr/sus cym
build]**CHORUS 1** [Bass in, E.Gtr in (arpeggiated)]

B | Amaj7 B E

The Father looks and pities me;

E/G# Amaj7 F#m9 B

He knows that I am dust.

Amaj7 B C#m

He treats me not as I deserve,

Amaj7 Bsus (E)

But as though I were just

[Snare build in]

INTERLUDE 1 [Str/Pno in, Brush kit (light groove)]

E - Esus | E - B7/D# | C#m - B | A -

VERSE 2 [Strings/Piano/

A | E B

The Father looks on me

Amaj7

A loaf and not a

Amaj7

He showers me with

Amaj7 F

for all my needs



E
nd smiles,
B Bsus/C#
sees;
C#m
ed son,
s (E)
pleased."
[Band out (ring)]

CHORUS 2 [E.Gtr in (arpeggiated)]

B | Amaj7 B E

The Father looks on me with love—

E/G# Amaj7 F#m9 B

A chain of love

Amaj7 B C#m

He found a poor and sinner

Amaj7 Bsus (A/C#)

Yet claimed me as His own.

[cres., sus cym build]

INTERLUDE 2 [Strings/bells in, full play]

A/C# - B/D# | E - E/G# | Amaj7 | B |

A/C# - B/D# | E - E/G# | Amaj7 | B [cooling] |

E - Esus | E - B7/D# | C#m - B | A |

[Band out (ring), AcGtr only (like Intro)]

VERSE 3 [Strings/AcGtr only (like Intro)]

E Esus E

The Father looks for me with hope,

Amaj7 B

For me, His wayward son.

Amaj7 B C#m

I stand afar, de - tained by shame;

Amaj7 F#m9 B - Bsus | B -

He cries for joy and runs! [sus cym
build]

[Band in (gently build)] [cres.]

CHORUS 3 [full]

B | Amaj7 B E

The Father looks on me and smiles,

E/G# Amaj7 F#m9 B

For it is Christ He sees;

Amaj7 B C#m

"This is my own be - lov - ed son,

/C# /B Amaj7 Bsus E /F#

In whom I am well pleased."

FOR PREVIEW ONLY

OUTRO [Str, Pno, AcGtr only (feels like Intro)]

E - Esus | E - B7/D# | C#m - B | A |

[kit build in, cres.]

E - Esus | E - B7/D# | C#m - B | A |

[cres. and] [let ring]

*Optional directions following recording arrangement